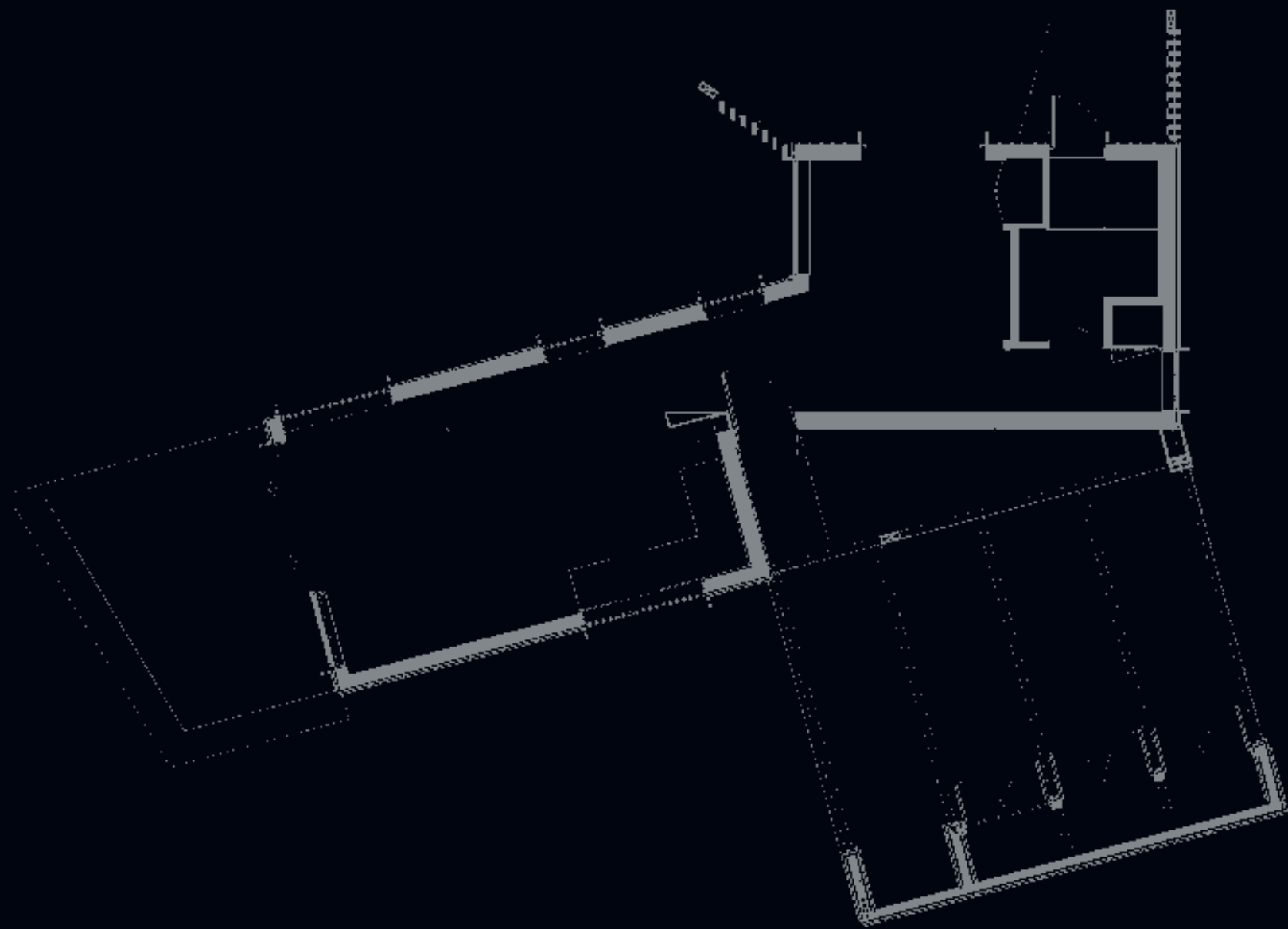


BARRY CONNOR

Skylark Cabin

Twizel, Mackenzie, New Zealand, 2020
Area: 50m²





Above: *gene cus di doluptibus niet ellab ipsant maximi, ipsae pro doluptatiae et alitaqu amenisc iissit invelli tinciis et doles aditem imus delit, veris aspellatio eaquis dolesci delluptas moditio ssum- quiant occulpa cus, solor aspe pliquia ectus.*

Born in 1975 in Billinge, Widnes, UK, BARRY CONNOR received a BA in Architecture from Kingston University (London, 1993-96) and did further studies in Archicad at Christchurch Polytechnic University of Technology (New Zealand, 2006). He worked at 3-Architecture (Christchurch, 2006-08) and at Ray Hawthorne Design (Christchurch 2008-13) while founding his own firm in Christchurch in 2010. Connor gives a single name to his houses, which include Simpson (Merivale, Christchurch, 2018); Tinning (Twizel, Mackenzie, 2018); Patterson (Hawarden, Hurunui, 2020); the Skylark Cabin (Twizel, Mackenzie, 2020, published here); and Lear which was still in the concept phase as this book went to press (Banks Peninsula, Canterbury, 2021-), all in New Zealand.

LOREM IPSUM dolor sit amet, consectetur adipiscing elit. Aenean commodo ligula eget dolor. Aenean massa. Cum sociis natoque penatibus et magnis dis parturient montes, nascetur ridiculus mus. Donec quam felis, ultricies nec, pellentesque eu, pretium quis, sem. Nulla consequat massa quis enim. Donec pede justo, fringilla vel, aliquet nec, vulputate eget, arcu. In enim justo, rhoncus ut, imperdiet a, venenatis vitae, justo. Nullam dictum felis eu pede mollis pretium. Integer tincidunt. Cras dapibus. Vivamtiem rhoncus. Maecenas tempus, tellus eget condimentum rhoncus, sem quam semper libero, sit amet adipiscing sem neque sed ipsum. Nam quam nunc, blandit vel, luctus pullet ante tincidunt tempus. Donec vitae sapien ut libero venenatis faucibus. Nullam quis ante. Etiam sit amet orci eget eros faucibus tincidunt. Duis leo. Sed fringilla mauris sit amet nibh. Donec sodales sagittis magna.

LOREM IPSUM dolor sit amet, consectetur adipiscing elit. Aenean commodo ligula eget dolor. Aenean massa. Cum sociis natoque penatibus et magnis dis parturient montes, nascetur ridiculus mus. Donec quam felis, ultricies nec, pellentesque eu, pretium quis, sem. Nulla consequat massa quis enim. Donec pede justo, fri ullamcorper ultricies nisi. Nam eget dui. Etiam rhoncus. Maecenas tempus, tellus eget condimentum rhoncus, sem quam semper libero, sit amet adipiscing sem neque sed ipsum. Nam quam nunc, blandit vel, luctus pulvinar, hendrerit id, lorem. Maecenas nec odio et ante tincidunt tempus. Donec vitae sapien ut libero venenatis faucibus. Nullam quis ante. Etiam sit amet orci eget eros faucibus tincidunt. Duis leo. Sed fringilla mauris sit amet nibh. Donec sodales sagittis magna.





Above: gene cus di doluptibus niet ellab ipsant maximi, ipsae pro doluptatae et alitaqu amenisc iissit invelli tinciis et doles aditem imus delit, veris aspellectio eaquis dolesci delluptas moditio ssum-quiunt occulpa cus, solor aspe pliquia ectus.



Above: gene cus di doluptibus niet ellab ipsant maximi, ipsae pro doluptatae et alitaqu amenisc iissit invelli tinciis et doles aditem imus delit, veris aspellectio eaquis dolesci delluptas moditio ssum-quiunt occulpa cus, solor aspe pliquia ectus.

Above: gene cus di doluptibus niet ellab ipsant maximi, ipsae pro doluptatae et alitaqu amenisc iissit invelli tinciis et doles aditem imus delit, veris aspellectio eaquis dolesci delluptas moditio ssum-quiunt occulpa cus, solor aspe pliquia ectus.

The client for this retreat wanted a place to retreat near the Ben Ohau Range. Twizel is in the Canterbury Region of the South Island. It had a population of 1,660 persons in 2021. The architect imagined two open plan spaces, one for the bedroom and bathroom, the other with the kitchen, entrance and living area. The angles of the volumes were calculated to allow specific views when lying in bed, washing the dishes, or having a shower. The circular skylight over the bed for example frames views of the Mackenzie Aoraki International Dark Sky Reserve, a 4,300 square kilometer area where light pollution is strictly limited. According to the architect, "The folded form also nods to the distinctive aerial display of the local Skylarks with their angular, precise and purposeful acrobatics." A carport connects directly to the entry porch. A burnt orange color for the structural elements was used at the request of the client. The cabin is placed among natural boulders from the site. An exterior rough sawn larch rainscreen evokes a bird's nest. Light-colored Beech plywood is used for the interiors, together with contrasting, black-edged rib detailing.

Lorem ipsum dolor sit amet, consectetur adipiscing elit. Aenean commodo ligula eget dolor. Aenean massa. Cum sociis natoque penatibus et magnis dis parturient montes, nascetur ridiculus mus. Donec quam felis, ultricies nec, pellentesque eu, pretium quis, sem. Nulla consequat massa quis enim. Donec pede justo, fringilla vel, aliquet nec, vulputate eget, arcu. In enim justo, rhoncus ut, imperdiet a, venenatis vitae, justo. Nullam dictum felis eu pede mollis pretium. Integer tincidunt. Cras dapibus. Vivamus elementum semper nisi. Aenean vulputate eleifend tellus. Aenean leo ligula, porttitor eu, consequat vitae, eleifend ac, enim. Aliquam lorem ante, dapibus in, viverra quis, feugiat a, tellus. Phasellus viverra nulla ut metus varius laoreet. Quisque rutrum. Aenean imperdiet. Etiam ultricies nisi vel augue. Curabitur ullamcorper ultricies nisi. Nam eget dui.

orem ipsum dolor sit amet, consectetur adipiscing elit. Aenean commodo ligula eget dolor. Aenean massa. Cum sociis natoque penatibus et magnis dis parturient montes, nascetur ridiculus mus. Donec quam felis, ultricies nec, pellentesque eu, pretium quis, sem. Nulla consequat massa quis enim. Donec pede justo, fringilla vel, aliquet nec, vulputate eget, arcu. In enim justo, rhoncus ut, imperdiet a, venenatis vitae, justo. Nullam dictum felis dapibus. Vivamus elementum semper nisi. Aenean vulputate eleifend tellus. Aenean leo ligula, porttitor eu, consequat vitae, eleifend ac, enim. Aliquam lorem ante, dapibus in, viverra quis, feugiat a, tellus. Phasellus viverra nulla ut metus varius laoreet. Quisque rutrum. Aenean imperdiet. Etiam ultricies nisi vel .

